

# A38 MRN Funding Bid for Highways Improvements



February 2025

# Agenda

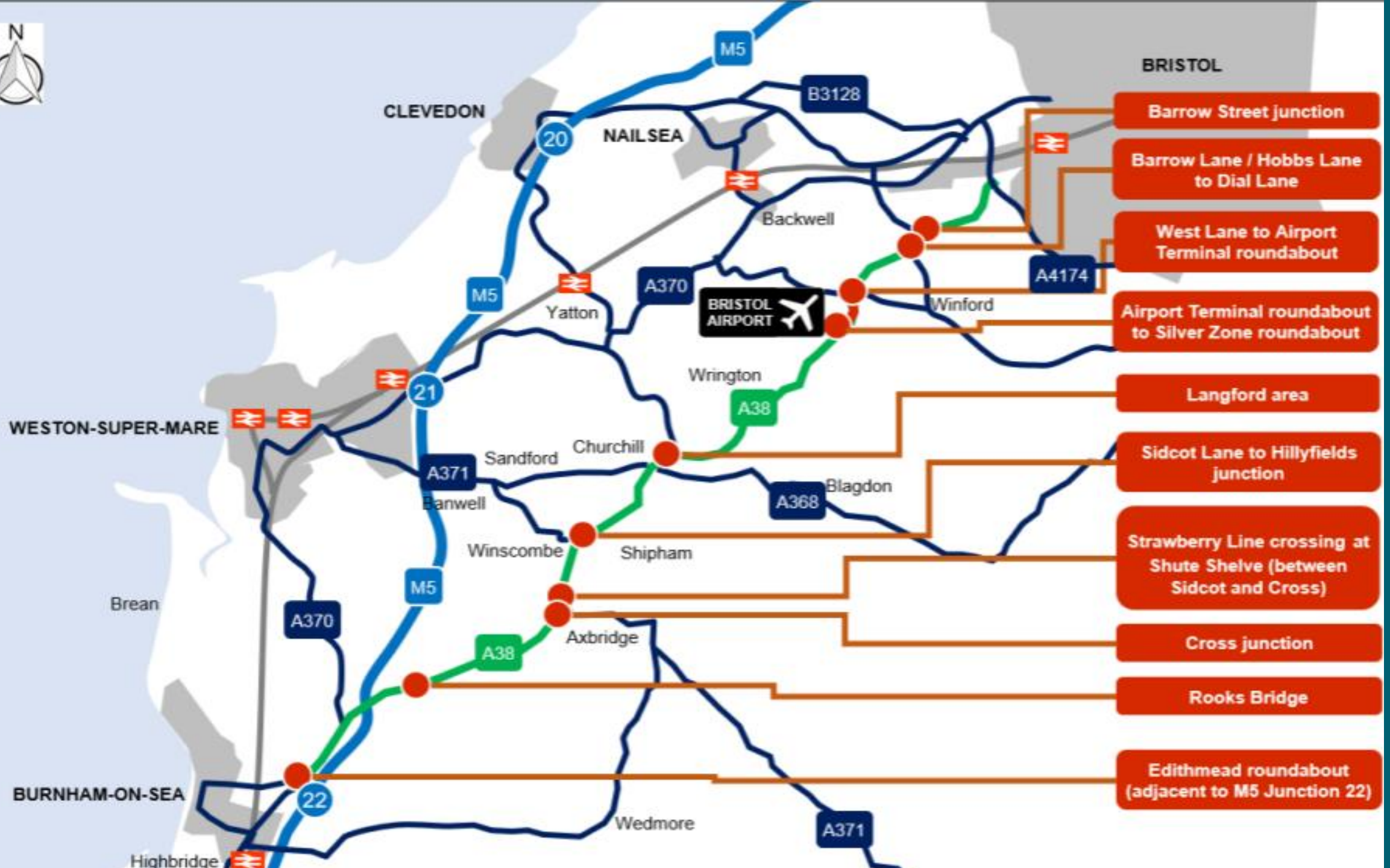
- Funding Overview
- Current Issues
- Goals of the Proposed Schemes
- Key Proposed Schemes in Somerset Council Area
  - Edithmead Roundabout
  - Rooks Bridge
  - Cross junction
  - Strawberry Line Crossing
  - Sustainable Travel Improvements
- Anticipated Benefits
- Next Steps
- Community Engagement Survey



# Funding Overview

## Partnership for Funding Bid

- Somerset Council (SC) and North Somerset Council (NSC) collaboration  
Focus on A38 stretch from Edithmead Roundabout to South Bristol Link
- Funding bid totals £30m (2/3<sup>rd</sup>s North Somerset, 1/3<sup>rd</sup> Somerset Council)
- Funding will come from Department for Transport from their MRN (Major Road Network) funding pot
- Funding aims to:
  - Reduce congestion
  - Support economic growth
  - Support housing delivery
  - Support all road users



# Current Issues

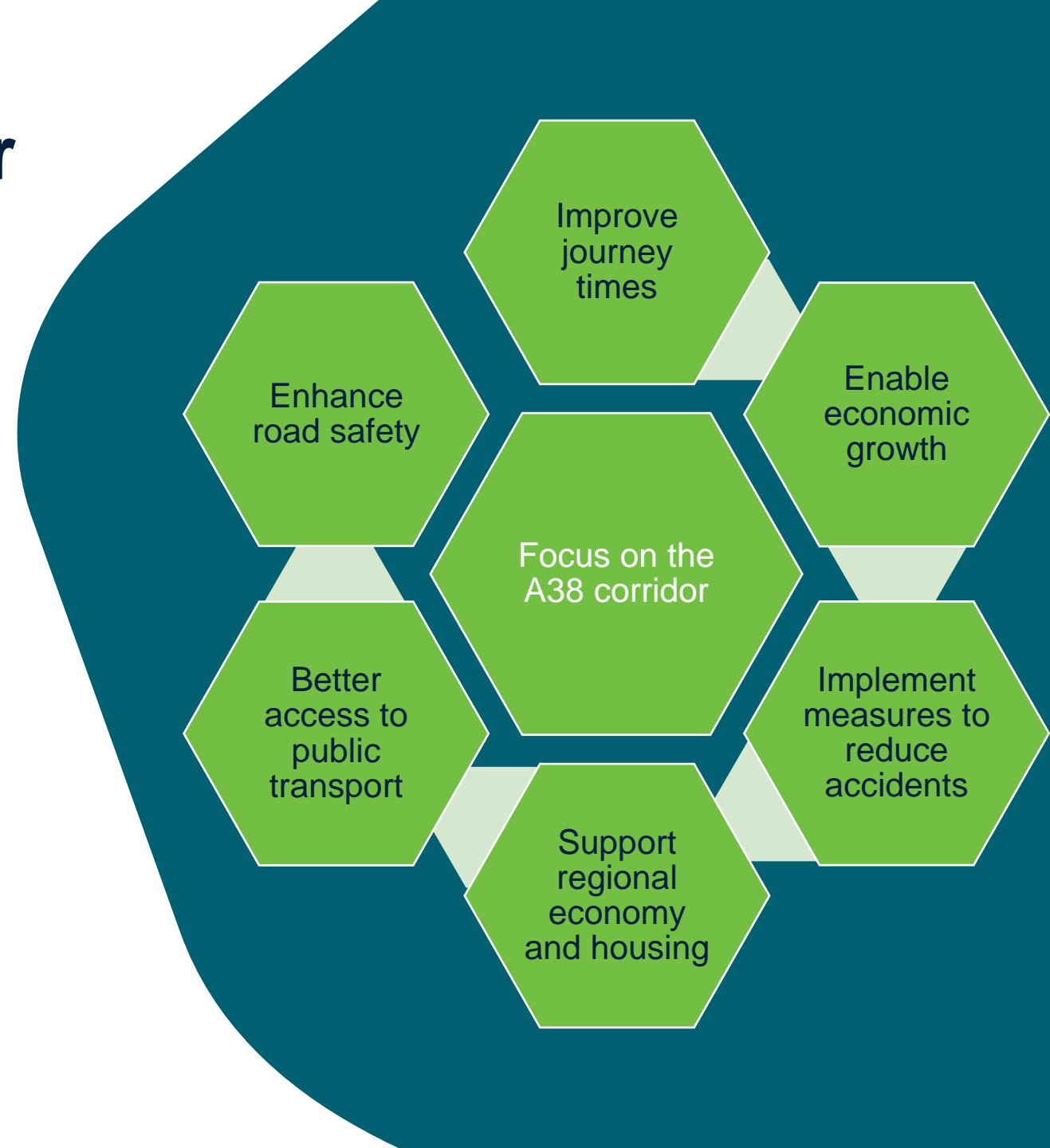
- Junctions Operating Close to Capacity
- Congestion at peak times
- Unreliable journey times
- Potential road safety issues
- Limited accessibility for pedestrians and cyclists
- Limited accessibility for bus users
- Impacts on local communities
- Impacts on local economy and businesses





# Goals of the Proposed Schemes on A38 Corridor

- Improve journey times
- Enhance road safety
- Implement measures to reduce risk of accidents
- Better access to public transport
- Support regional economy and housing
- Enable economic growth
- Facilitate housing delivery



# Edithmead Roundabout

## **National Highways concerns**

- Queuing on approach to Edithmead roundabout from Junction 22
- Queues extending back onto M5 motorway during peak times

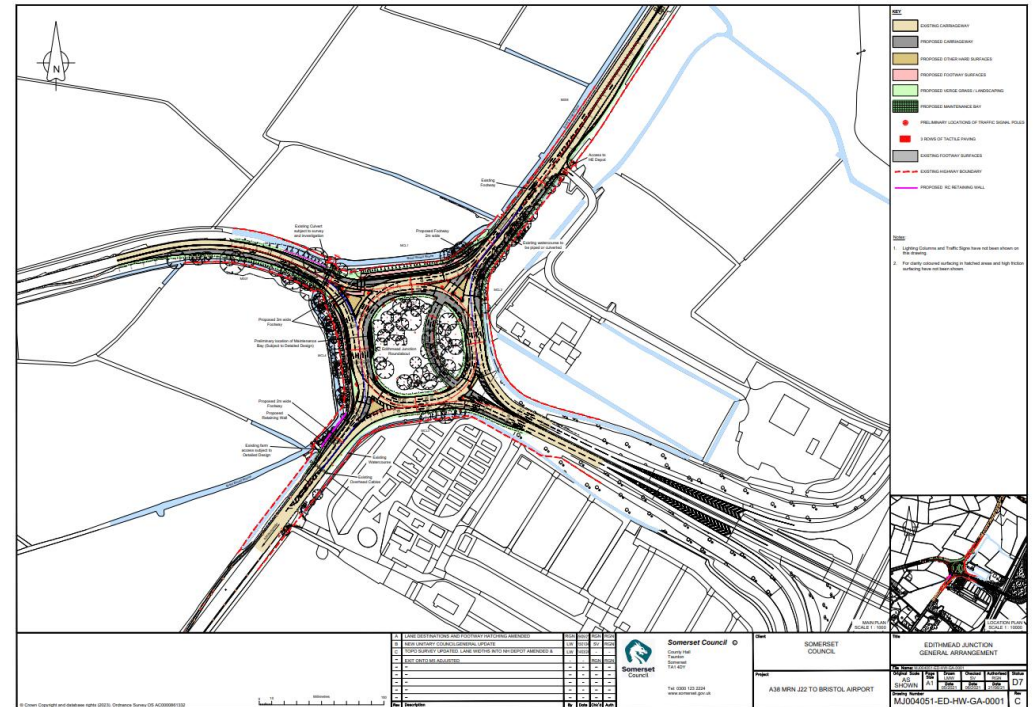
## **Scheme Objectives**

- Improve roundabout to tackle congestion
- Enhance resilience of A38 which is a signed diversionary route for M5
- Future-proof roundabout – increases in traffic over time

# Edithmead Roundabout Improvements

Creation of a through-about with signalisation of all arms of the roundabout. The scheme will improve the Edithmead Roundabout (providing access to M5 Junction 22) to tackle the existing issues of congestion and queuing back onto the mainline carriageway of the motorway

- Increase the number of traffic lanes on each roundabout entry arm;
- Widen the circulatory carriageway;
- Provide a through-lane for right-turning vehicles from the M5 J22 to the A38 northbound;
- Install traffic signals on all approach arms and on the roundabout circulatory carriageway.




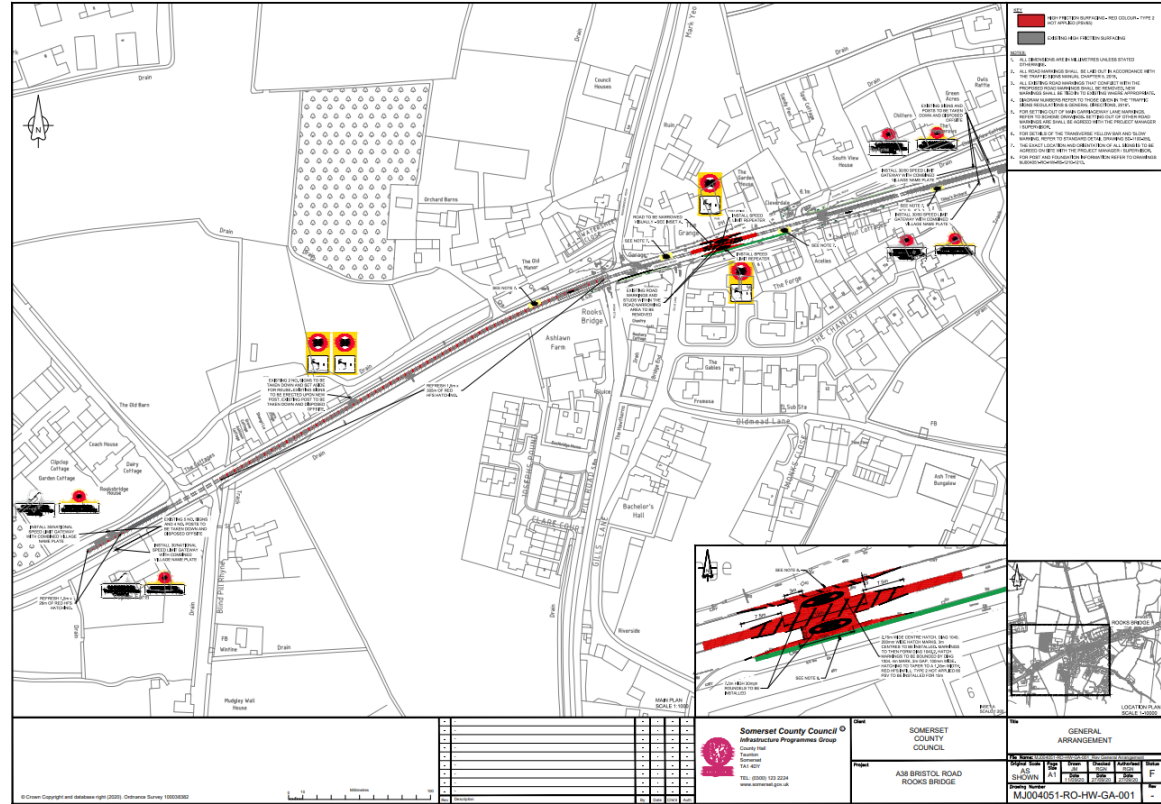


# Rooks Bridge

Safety scheme comprising mainly road markings.

### Anticipated benefits from the scheme:

- Improved safety for pedestrians and cyclists
  - Improved safety for traffic crossing on A38
  - Increased journey time reliability
- 



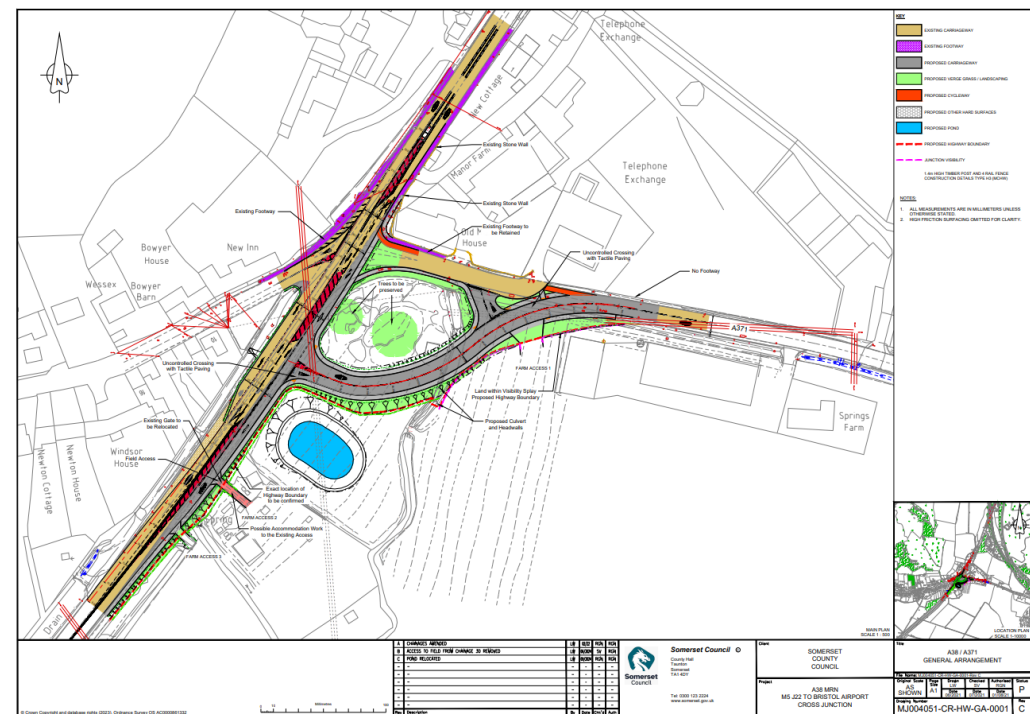
# Cross Junction

Creation of a staggered junction design at Cross.

Redesign Cross junction (A38 / A371 Cross Lane / Old Coach Road) to provide a staggered junction layout. Introduce dedicated left- and right-turn lanes on the A38 approaches to Old Coach Road and Cross Lane.

Anticipated benefits from the scheme:

- Improved safety for pedestrians and cyclists
- Improved safety for traffic crossing on A38
- Improved journey time reliability



# Strawberry Line Crossing

An improved crossing of the A38 at Shute Shelve.

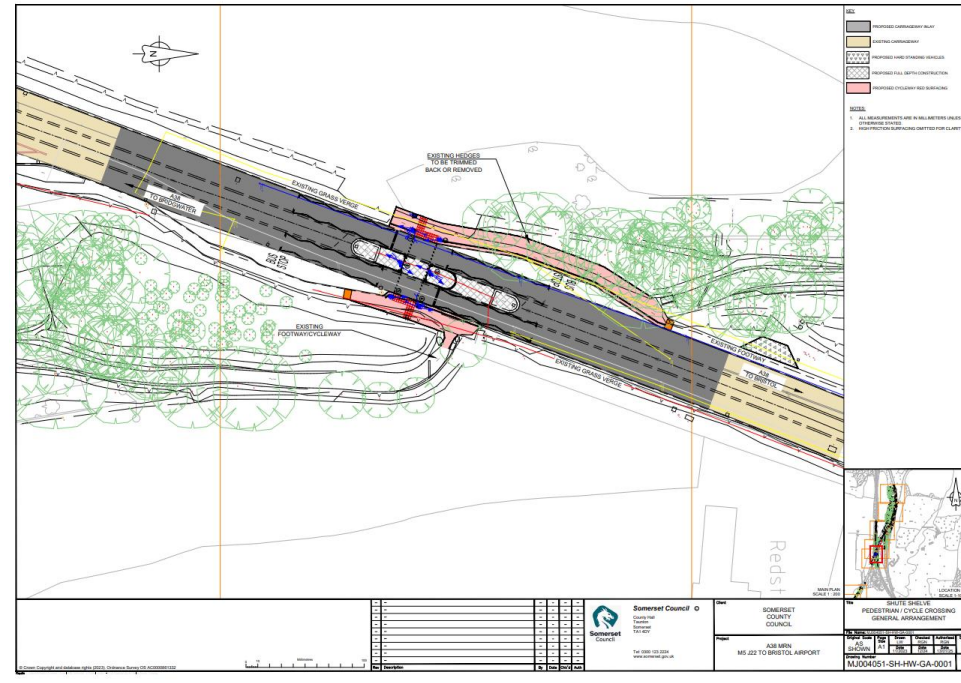
Upgrade crossing where the traffic-free Strawberry Line route meets the A38.

## Weekday 12h survey

- 60 pedestrians
- 162 cyclists
- 1 scooter

## Weekend 12 h survey

- 107 pedestrians
- 424 cyclists
- 2 prams



# Sustainable Travel Improvements

Improvements to bus stops and pedestrian/cycling facilities at various locations.

- More sheltered bus stops
- Better lighting
- More seating
- Improved signage
- Accessible boarding (for example raised curbs for level access for pushchairs, prams and wheelchairs users)



# Anticipated Benefits

## Improved Road Safety

- Fewer accidents and injuries
- Safer driving conditions

## Enhanced Resilience and Reliability

- More consistent travel times
- Promote sustainable transport options

## Supporting Housing and Economic Growth

- Facilitating new housing developments
- Boosting local economies



**Somerset**  
Council



# Next Steps

## Completion of Business Case

Each element of the programme are being designed and procured

## Coordination with North Somerset Council

Coordination for funding bid and delivery of works

## Coordination with National Highways and other key stakeholders

## Citizens Space Survey

Engagement with the community through an online survey  
Collecting views to compile into a report for the FBC



# Community Engagement Survey

## Citizens Space

### Community Engagement Initiative

- Launched an online survey
- Aim to gather views from the community

### Survey Purpose

- Inform proposals for sustainable transport
- Report will contribute to the FBC
- [A38 Improvement Scheme - Somerset Council - Citizen Space](#)



# Thank you

For any other information, please contact

[josephine.paterson@somerset.gov.uk](mailto:josephine.paterson@somerset.gov.uk)

[ioana.valcu@somerset.gov.uk](mailto:ioana.valcu@somerset.gov.uk)